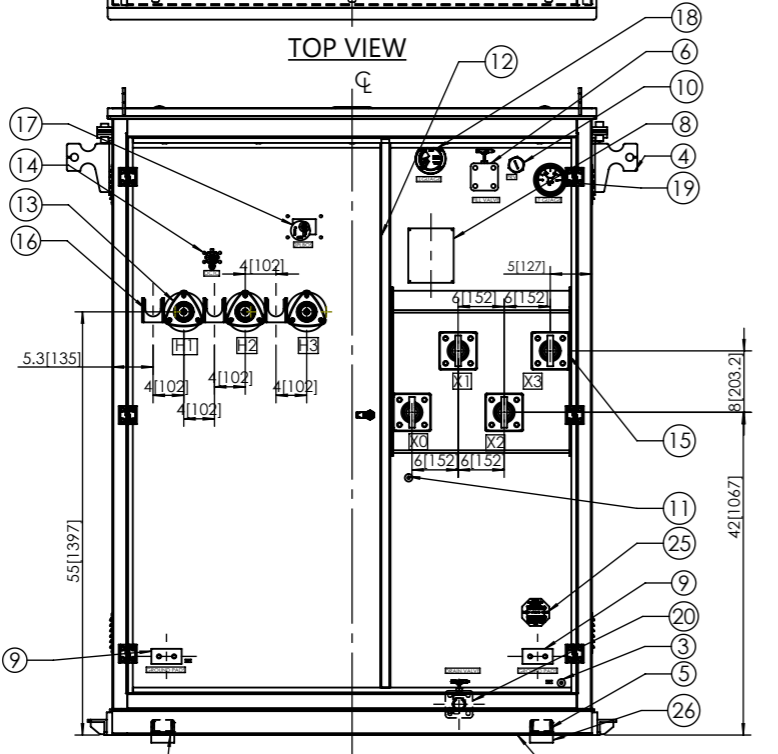
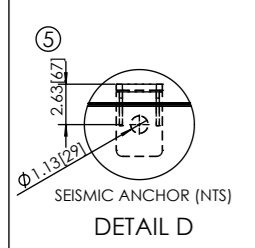
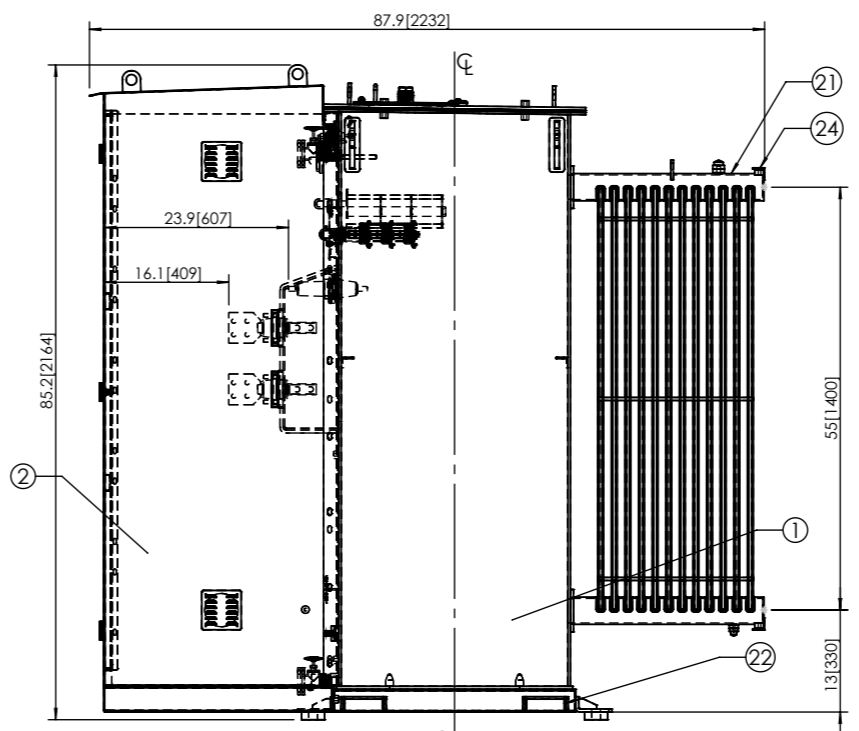


ISOMETRIC VIEW



FRONT VIEW SHOWN WITHOUT DOORS



RHS VIEW

27	CURRENT LIMITING FUSE	03
26	VIBRATION PADS	04
25	SHOCK INDICATOR	01
24	RADIATORS SUPPORT BRACKET	02
23	1" AIR RELEASE PLUG	01
22	JACKING DEVICES	04
21	PANEL TYPE RADIATORS WITHOUT VALVES (CRCA 1 MM THK) 1400 X 520 X 12 FIN	02
20	ELBOW TYPE CONNECTION 1" DRAIN VALVE	01
19	LIQUID TEMPERATURE GUAGE (THERMOMETER)	01
18	MAGNETIC LIQUID LEVEL GUAGE	01
17	DEAD-FRONT, RADIAL FEED WITH TWO POSITION LOAD BREAK OIL SWITCH	01
16	PARKING STAND	03
15	LV BUSHING 1.2KV, 4 HOLES EPOXY TYPE.	04
14	OFF CIRCUIT TAP CHANGER +/- 5 % in step of 2.5%	01
13	HV BUSHING 15 KV, 100A, EPOXY DEAD FRONT	03
12	HV/LV BARRIER (MS)	01
11	LV NEUTRAL GROUND PAD 50-13-TAP, WITH GROUND STRAP	01
10	PRESSURE RELIEF VALVE	01
09	SS GROUND PADS	02
08	R&D PLATE	01
06	1" FILL VALVE	01
05	SEISMIC ANCHOR BRACKETS	04
04	LIFTING DEVICES	04
03	PROVISIONS FOR TANK TO CABINET GROUND	02
02	CABINET BOLTED ON REMOVELE STILL, OPEN BOTTOM 1.25 INCH FLANGE, HINGED DOOR- KEY INTERLOCK TO HV DOOR	01
01	TANK (SS)	01
ITEM NO	DESCRIPTION	QTY.

WEIGHT OF TRANSFORMER	
CORE COIL ASSEMBLY WEIGHT	5566 LB [2525 KG]
TANK & FITTING	5401 LB [2450 KG]
OIL WEIGHT	3637 LB [1650 KG]
TOTAL WEIGHT OF TRANSFORMER	14605 LB [6625 KG]

OVERALL DIMENSIONS		
LENGTH	74.3 [1887]	+/- 3%
WIDTH	87.9 [2232]	+/- 3%
HEIGHT	85.2 [2164]	+/- 3%

NO OF PHASES	3
COOLING	KNAN-coil : FR3/EQUIVALENT
TEMP RISE °C	65°C
VECTOR GROUP	Dyn1
TYPE	OUTDOOR
SPECIFICATION	IEEE:C57.12.00

General Table	
KVA	1500
VOLTAGE HV (V)	13200
+/- 5 % in step of 2.5%	
VOLTAGE LV (V)	480
CURRENT HV (A)	65.60
CURRENT LV (A)	1804.27
FREEQUENCY (Hz)	60

- NOTE:
- 1) THIS OUTLINE IS FOR ERECTION OR MOUNTING PURPOSES. IT IS NOT TO SCALE AND SHOULD NOT BE REGARDED AS INDICATING THE EXACT DETAILS OF CONSTRUCTION.
 - 2) KEY INTERLOCK TO HV DOOR
 - 3) COLOR : MUNSHEL 7GY3.29/1.5
 - 4) THREE DANGER HIGH VOLTAGE DECALS.
 - 5) PRESSURE TEST = 6.5 PSI AS PER CBIP.
 - 6) VACUUME TEST = 760mm OF Hg AS PER CBIP
 - 7) TO SUPPLY 1 LTRS TOUCH-UP PAINT ALONG WITH THE PACKING.
 - 8) SWITCHES ARE NOT REQUIRED AS PER TECHNICAL SPECIFICATIONS. HENCE NOT CONSIDERED THE SAME.

UNLESS OTHERWISE SPECIFIED:
PRIMARY DIMENSIONS ARE IN INCHES.
SECONDARY DIMENSIONS [] ARE MM

DO NOT SCALE DRAWING



OMEX Industries LLC
P.O.Box 203
Fontana, CA. 92334

REV	DETAILS OF REVISION	SIGN.	DATE
R1	1) MARSHALING BOX REMOVE. 2) TEMP. RISE KEEP ONLY 65°C	ADS	07-08-24

DETAIL'S	NAME	DATE
DRAWN BY	MHS	01-07-24
CHEKD BY	BRT	01-07-24
APRVD BY	ADS	01-07-24
MATERIAL:	SCALE:	

TITLE: GENRAL ARRANGEMENT OF 1500 KVA, 13.2/0.48 KV RADIAL FEED PAD MOUNTED TRANSFORMER	
DWG NO. -	REVISION STATUS : R1
ES-PMRF-01-0001-01	SHEET 1 OF 1 A4